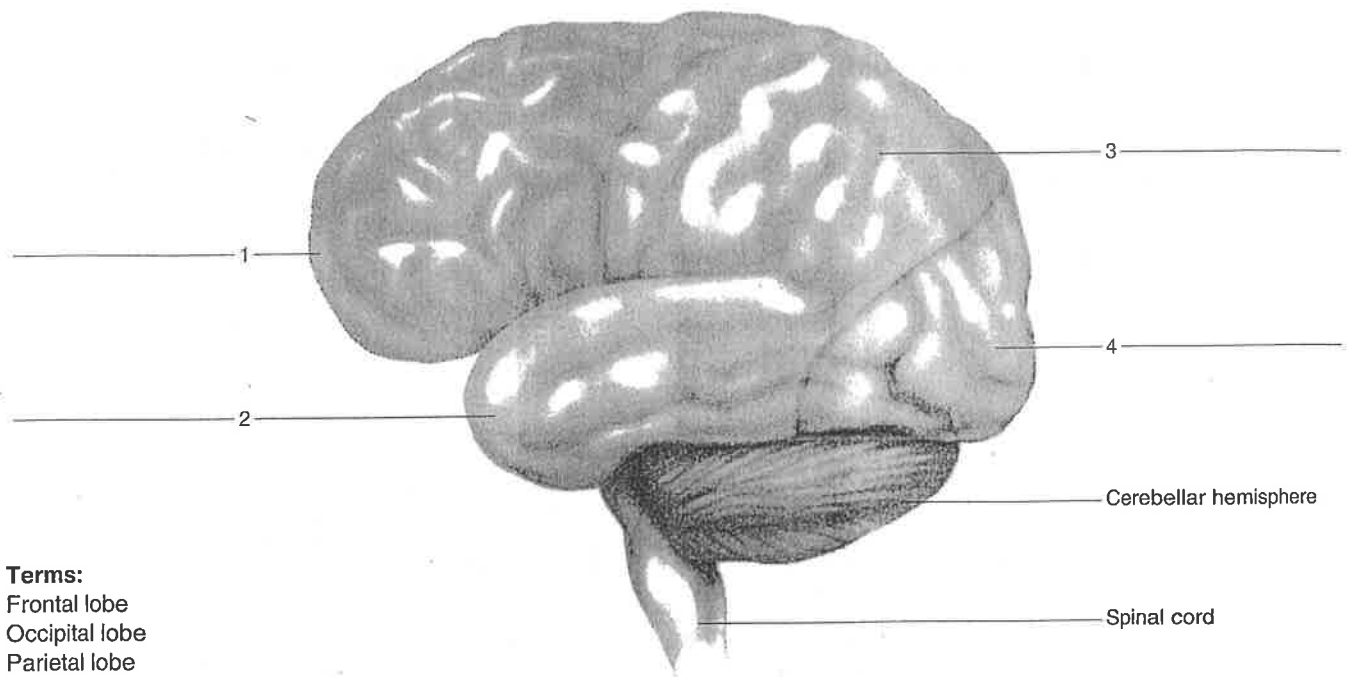


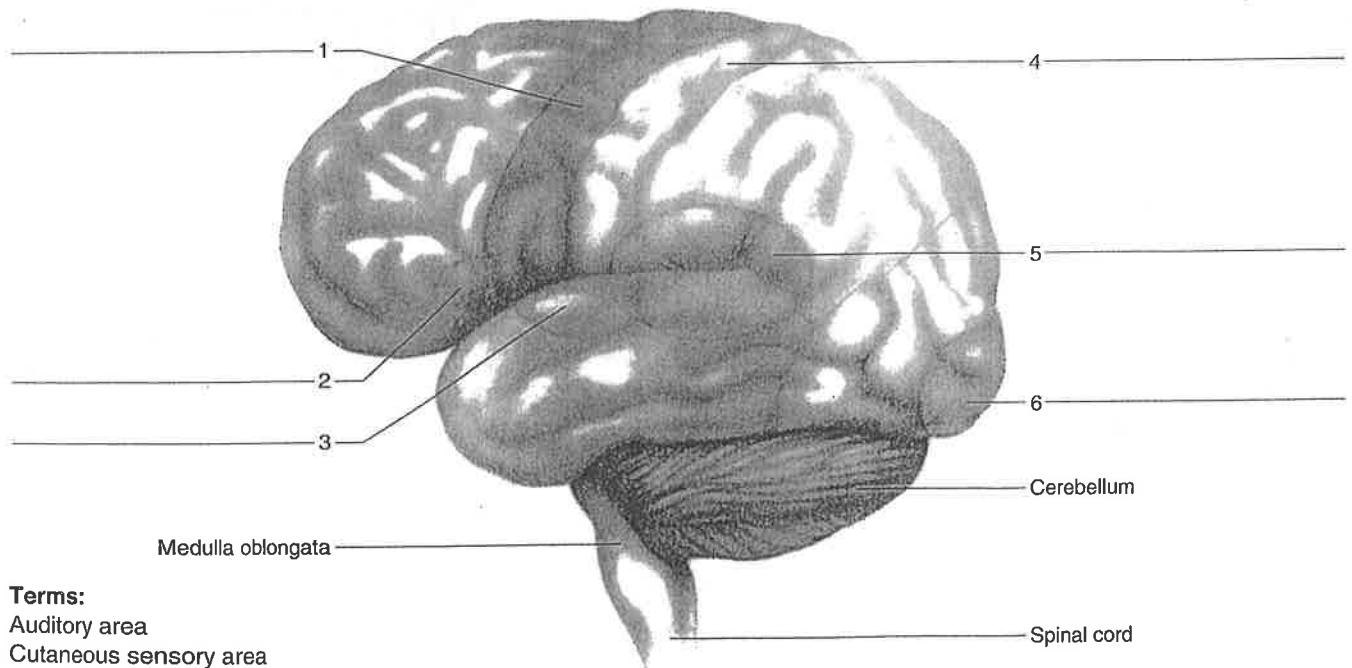
**Figure 27.2** Label the lobes of the cerebrum, using the terms provided, and color each lobe.



**Terms:**

- Frontal lobe
- Occipital lobe
- Parietal lobe
- Temporal lobe

**Figure 27.3** Label the functional areas of the cerebrum, using the terms provided. (Note: These areas are not visible as distinct parts of the brain.) Color each area.



**Terms:**

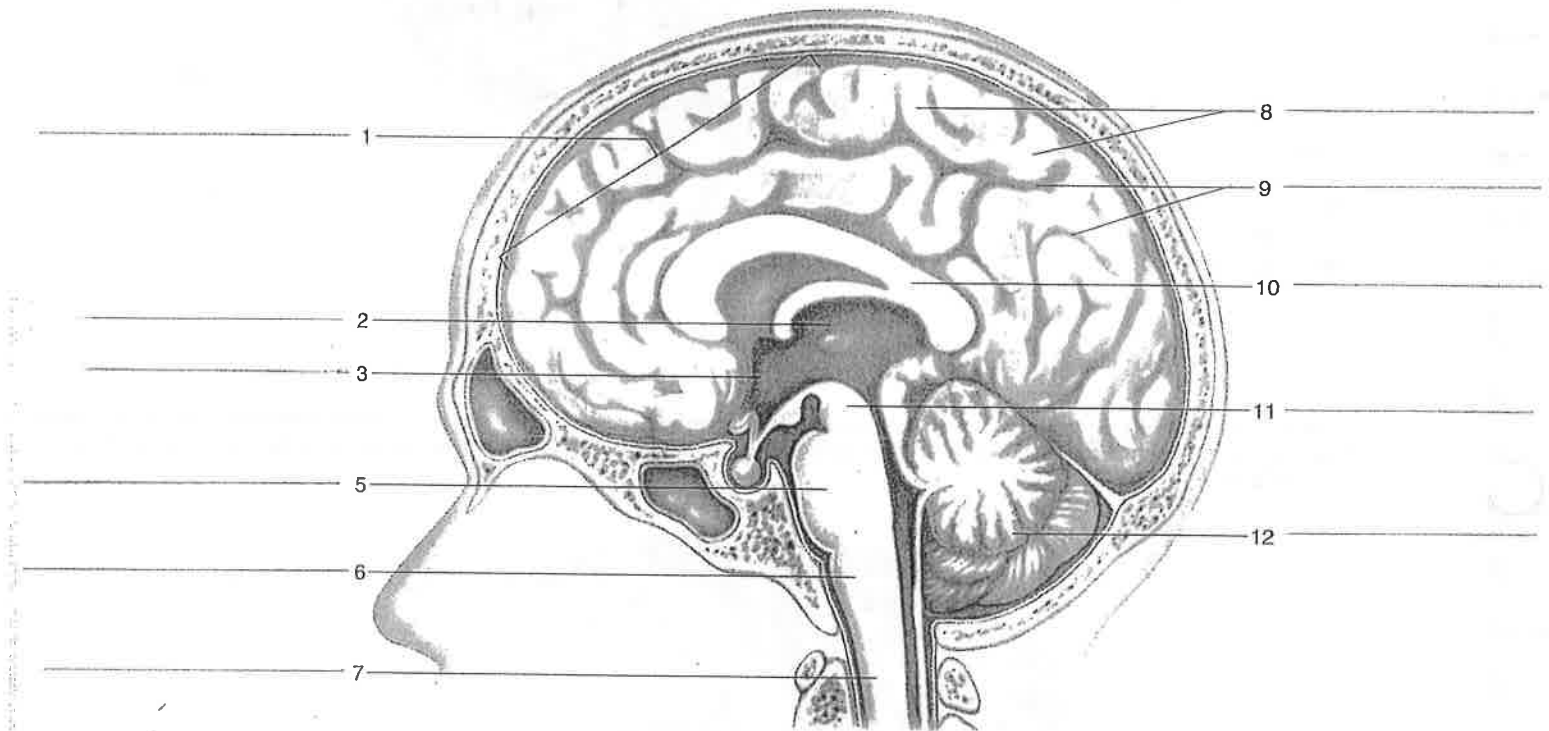
- Auditory area
- Cutaneous sensory area
- General interpretative area
- Motor area for voluntary muscle control
- Motor speech area (Broca's area)
- Visual area

**Label the diagram using the word bank below and then color each structure.**

Cerebellum  
Cerebrum  
Convolutions/gyri  
Corpus callosum

Hypothalamus  
Medulla oblongata  
Midbrain  
Pons

Spinal cord  
Sulci  
Thalamus



What numbers make up the diencephalon?

What numbers make up the brainstem?