

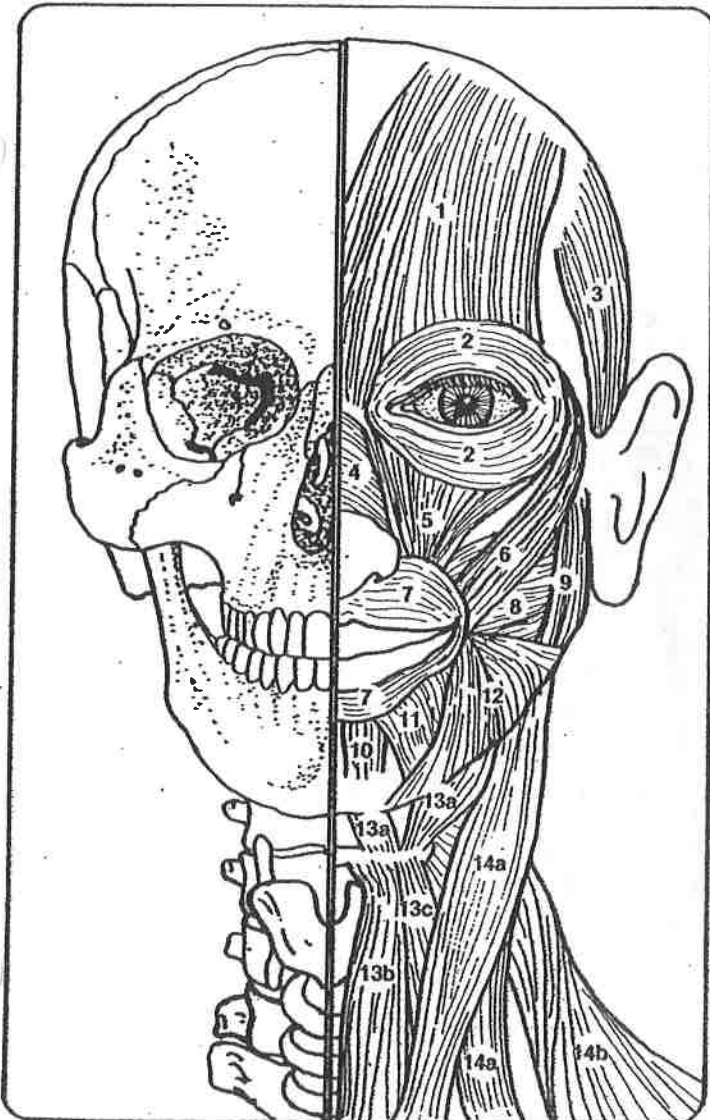
# MUSCLES OF THE FACE, HEAD, AND NECK

The complex muscles of the head and neck are capable of rotation and powerful movement as well as the minute coordinated actions that express slight emotional changes in the face. Unlike most skeletal muscles, the face and head muscles are not attached to a moving limb. Instead they insert either into the flat bones of the skull or face or into head tissue such as the lip or skin of the chin. The *muscles of facial expression*, located near the skin (superficial muscles), register emotion and also help you chew and speak. The *muscles of mastication* move the lower jaw primarily for chewing, but they also are necessary for speaking. The *muscles of the tongue* help with chewing and swallowing and are extremely important for making the complex movements required for human speech. Some of the tongue muscles have both their origin and insertion at the hyoid bone; others insert into the tongue. The *muscles of the neck* arise primarily from the sternum and clavicle and as far down as the sixth vertebra. Neck muscles permit you to rotate and extend your head.

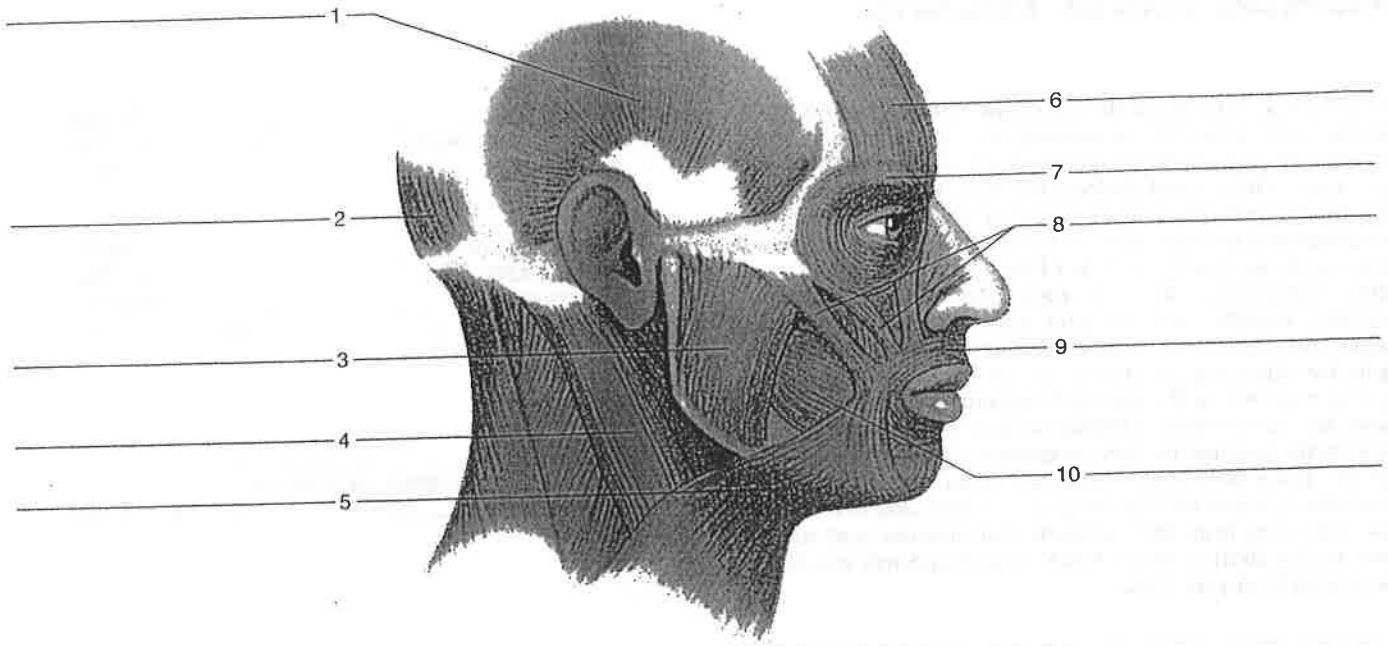
- 1. FRONTALIS \_\_\_\_\_ Orange
- 2. ORBICULARIS OCULI \_\_\_\_\_ Light Blue
- 3. TEMPORALIS \_\_\_\_\_ Purple

- 6. ZYGOMATICUS \_\_\_\_\_ Yellow
- 7. ORBICULARIS ORIS \_\_\_\_\_ Blue
- 8. BUCCINATOR \_\_\_\_\_ Light Brown
- 9. MASSETER \_\_\_\_\_ Red

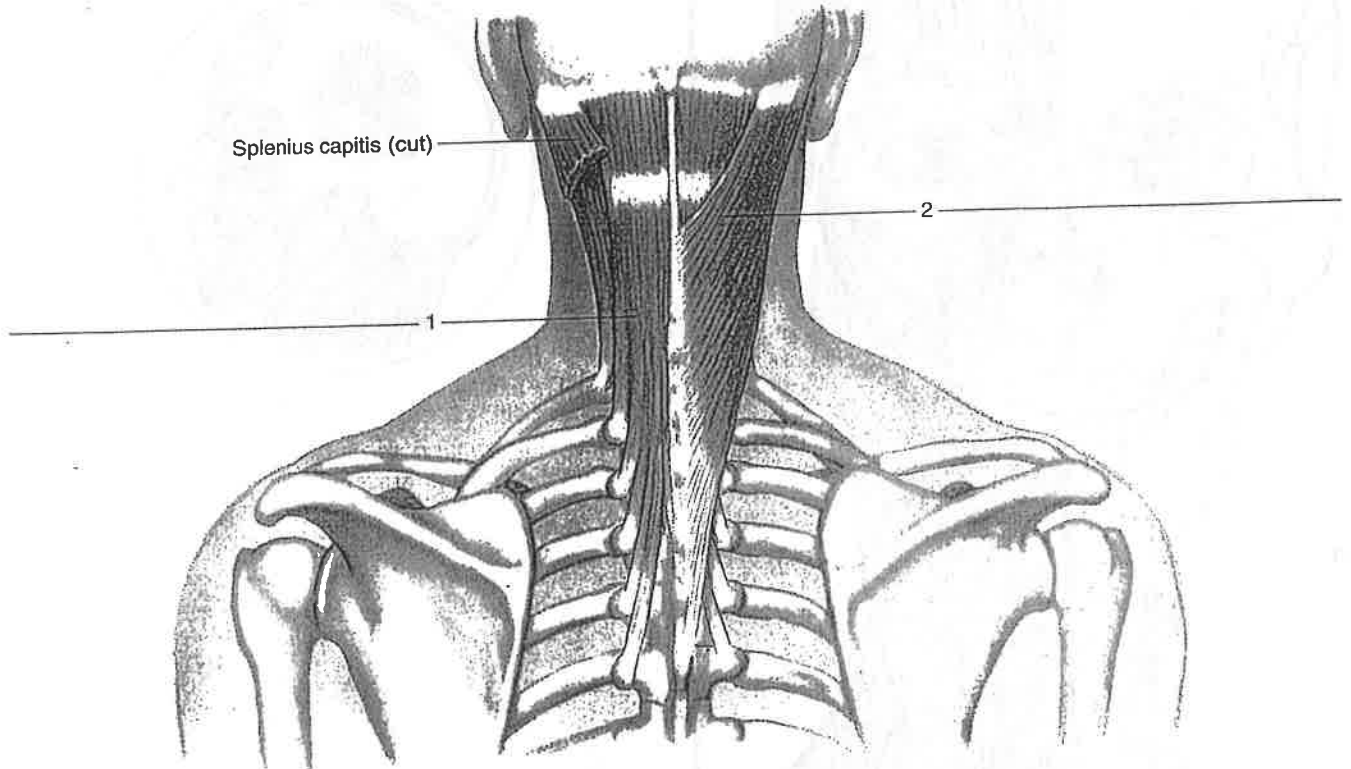
- 14. a. STERNOCLEIDOMASTOIDEUS and  
b. TRAPEZIUS \_\_\_\_\_ Light Orange



**Figure 20.1** Label the muscles of expression and mastication.



**Figure 20.2** Label these deep muscles of the posterior neck (trapezius removed).



## Label and Color the following:

Frontalis

Temporalis

Occipitalis

Masseter

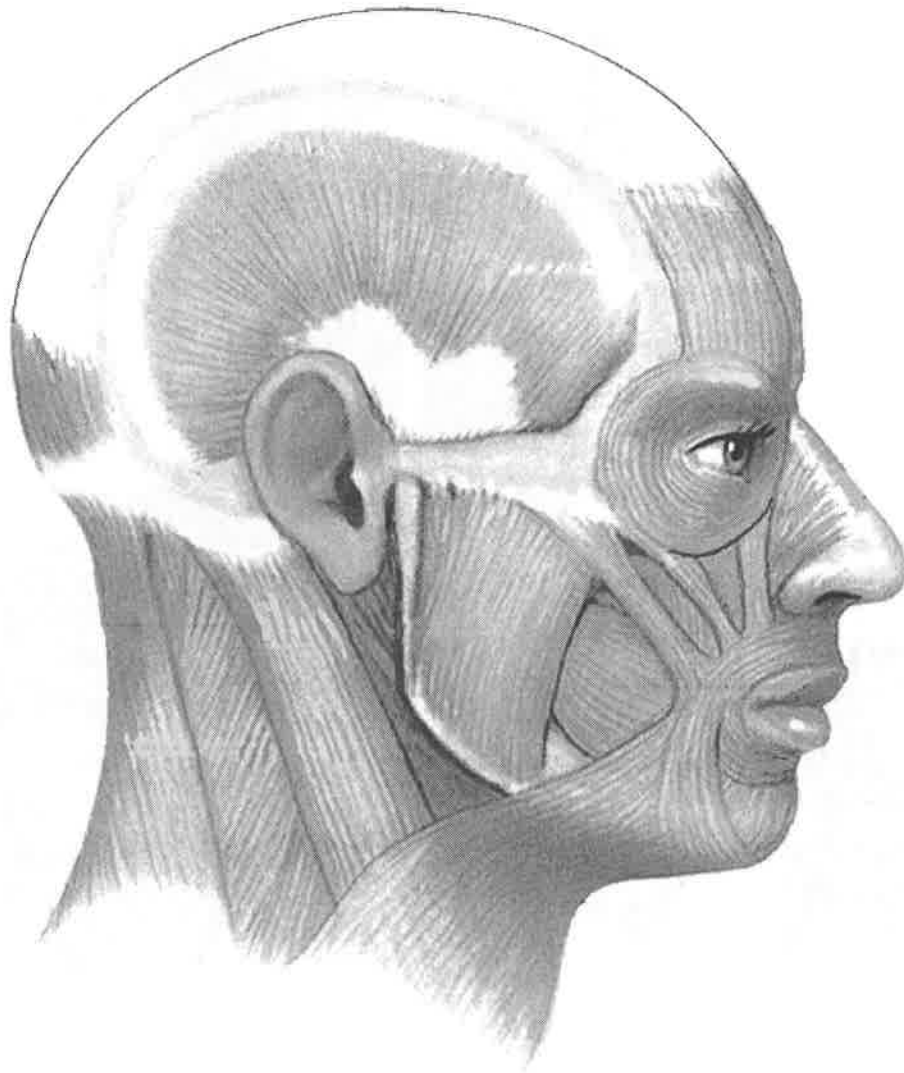
Buccinator

Zygomaticus

Orbicularis oculi

Orbicularis oris

Sternocleidomastoid



**Label and Color the following:**

Splenius capitis

Semispinalis capitis

