

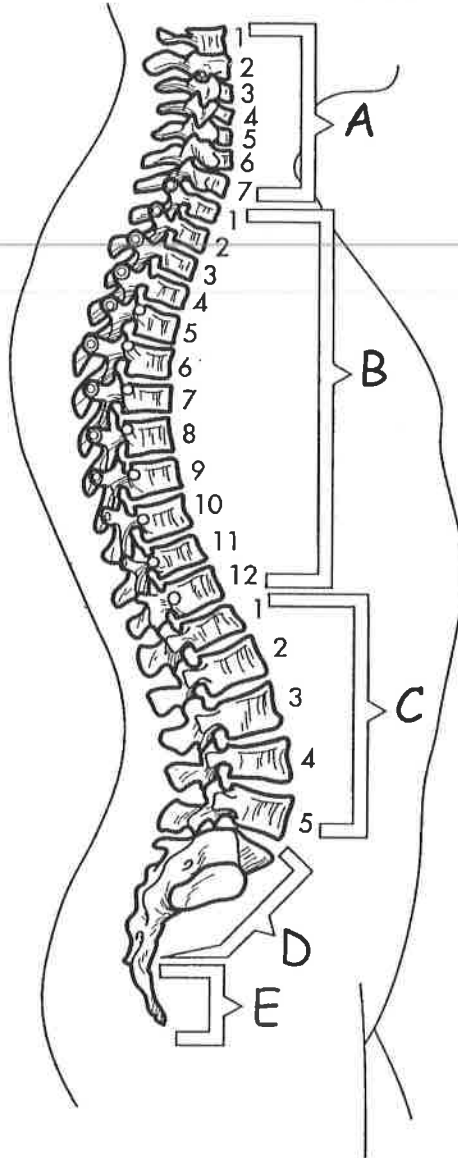
Vertebral Column + Ribs

6. Color the brackets that represent the following bones.

- Cervical vertebrae (A)
- Thoracic vertebrae (B)
- Lumbar vertebrae (C)

- Sacrum (D)
- Coccyx (E)

Vertebral Column



Vertebrae

Figures IV-36 + IV-37

- * Color - □ Atlas
- Axis

Figures IV-38, IV-39, IV-40

- * Label - Body
- Spinous process
- Vertebral foramen (if shown)

Color

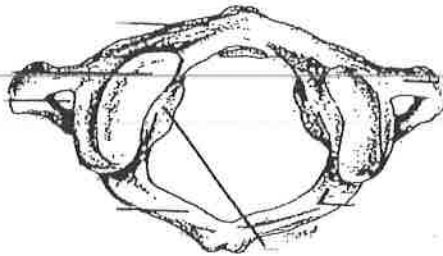


Figure IV-36: The Atlas
(first cervical vertebra)

Color

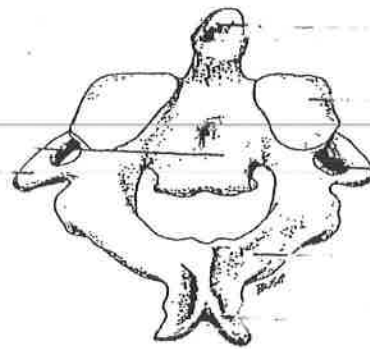


Figure IV-37: The Axis
(second cervical vertebra)

KEY TO FIGURE IV-38

Label
1. body

Label
6. spinous process

Label
8. vertebral foramen

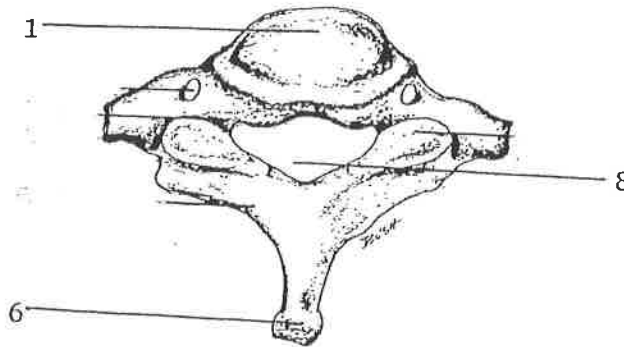


Figure IV-38: Seventh Cervical Vertebra

KEY TO FIGURE IV-39

- Label
- 2. body (centrum)

- Label
- 8. spinous process

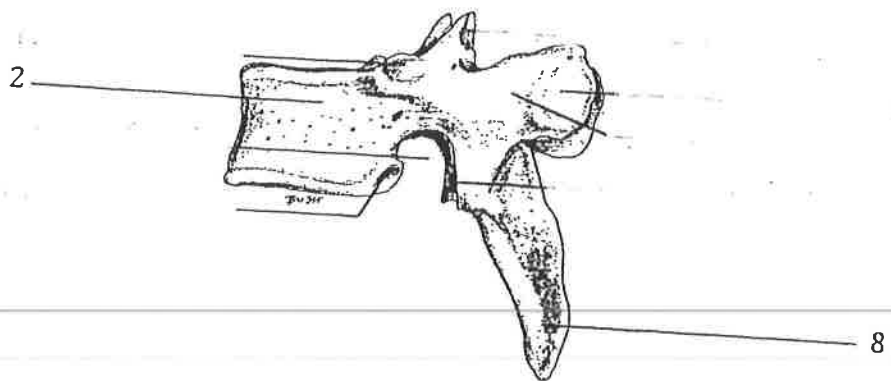


Figure IV-39: A Typical Thoracic Vertebra

KEY TO FIGURE IV-40

- Label
- 1. spinous process

- Label
- 5. vertebral foramen

- Label
- 9. body (centrum)

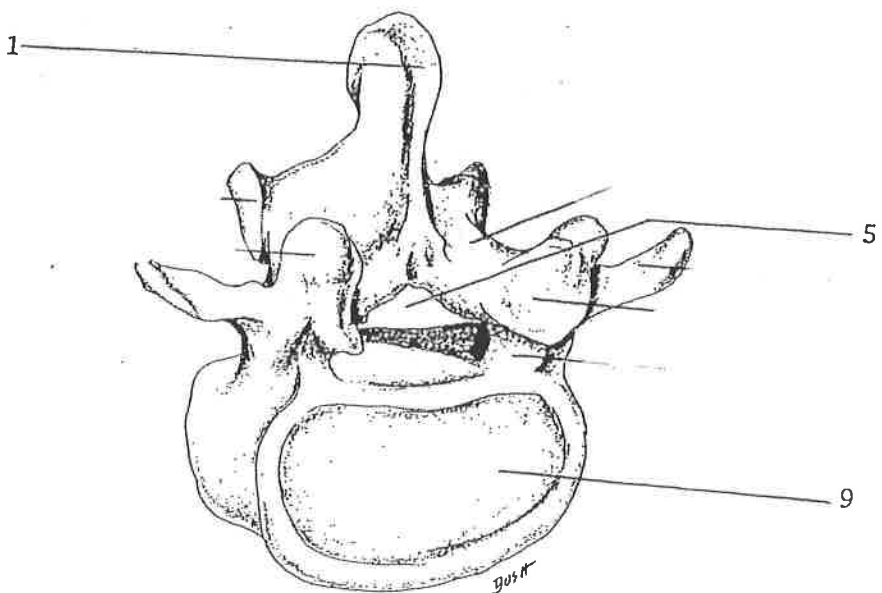
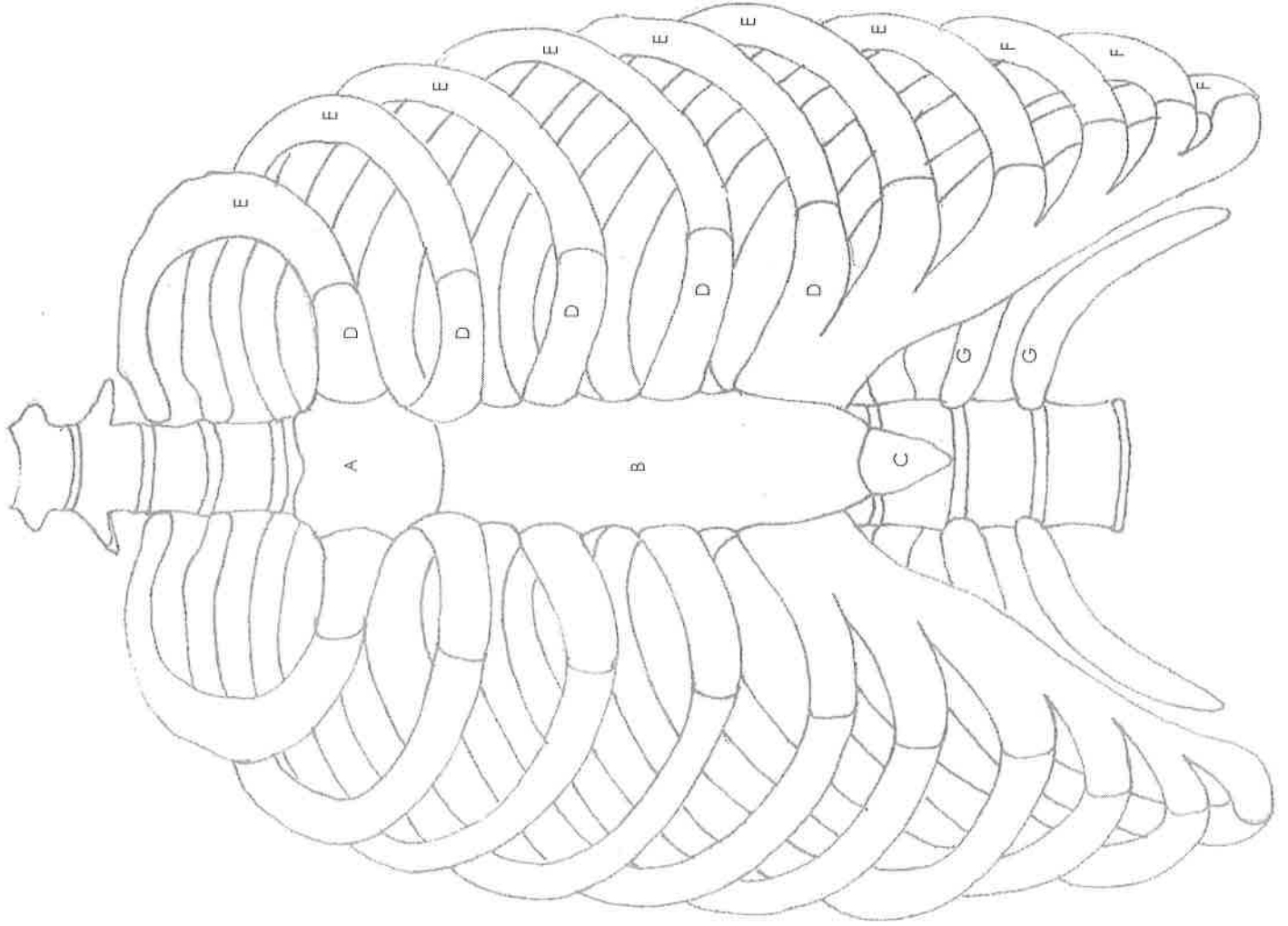


Figure IV-40: A Typical Lumbar Vertebra

RIB CAGE



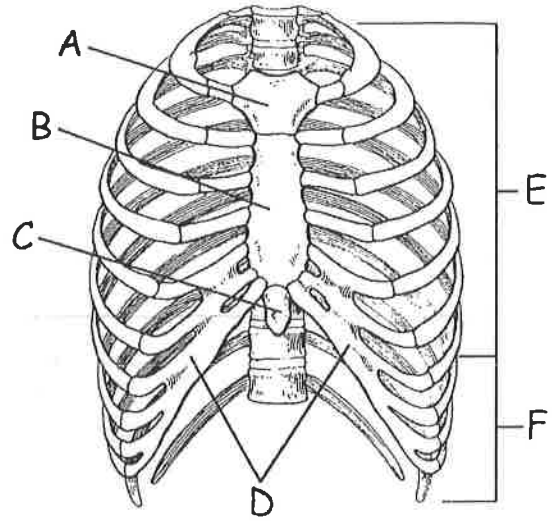
Name: _____
Date: _____ Period: _____

Answer Key

- A. Manubrium
- B. Sternum body
- C. Xiphoid process
- D. Costal cartilage
- E. True ribs
- F. False ribs
- G. Floating ribs

10. Match the bone with the correct letter from the diagram at the right.

- _____ Costal cartilage
- _____ False ribs
- _____ Sternum, body
- _____ Sternum, Manubrium
- _____ True ribs
- _____ Xiphoid process



11. Go to Bone Station #2 and identify the bones represented by the following letters.

LETTER	NAME OF BONE	LETTER	NAME OF BONE
A		H	
B		I	
C		J	
D		K	
E		L	
F		M	
G		N	